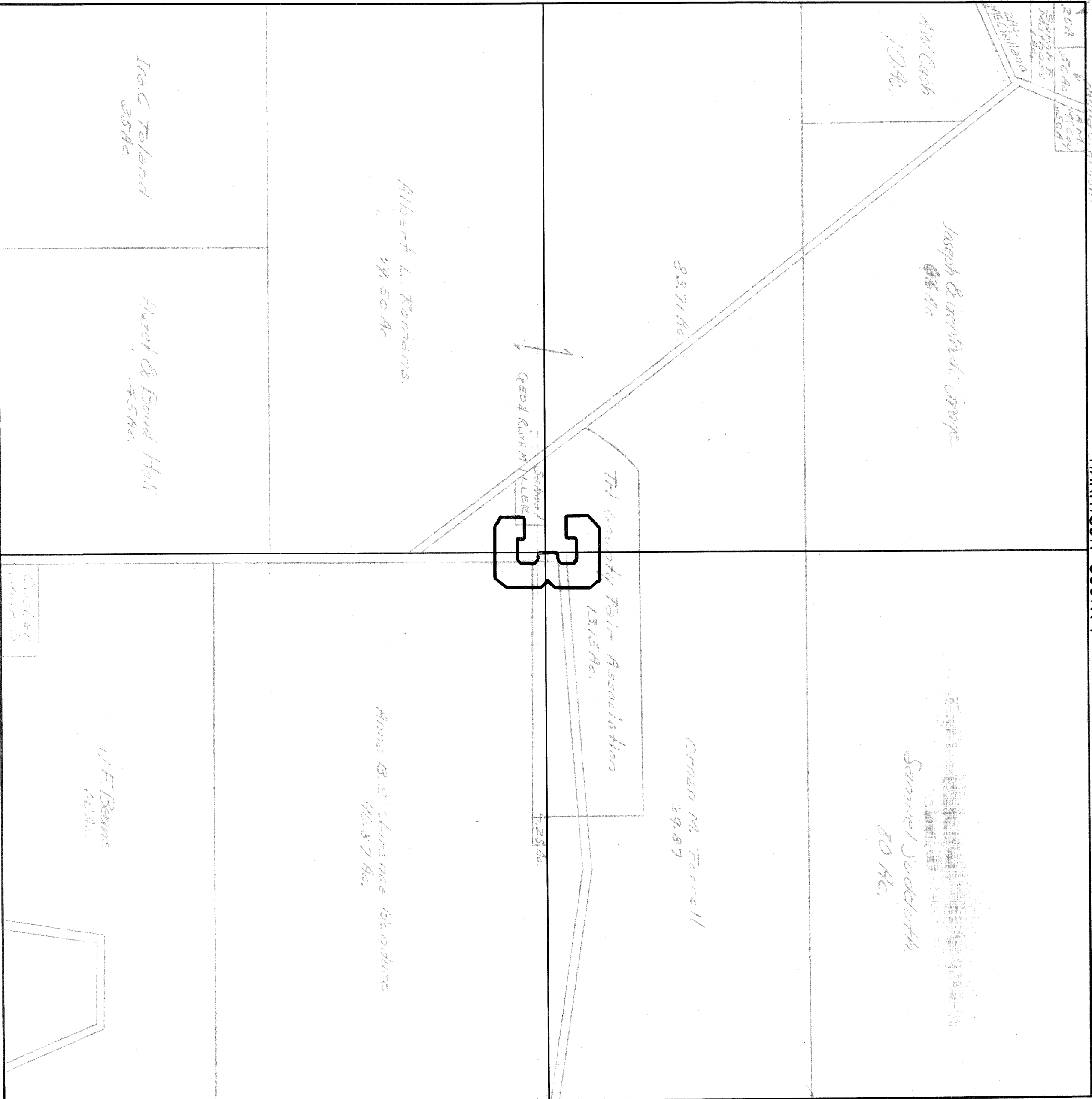


LONDONDERRY

TOWN II RANGE 7

HARRISON COUNTY

BELMONT COUNTY



25A	50 Ac.	MCGOY
24A	12 Ac.	MCGOY
23A	10 Ac.	MCGOY

3

W.S. & Fred L. Phipps

James & Arnold

24 Ac. Island
24 Ac. Island

School
Geo. Ruth Miller

The County Fair Association
131.5 Ac.

42.25 Ac.

Ornan M. Ferrell
69.87

Samuel Sudduth
80 Ac.

Anna B. & Clarence Bendure
96.87 Ac.

Albert L. Tompkins
77.50 Ac.

Hazel & Boyd Hill
45 Ac.

Ira C. Toland
35 Ac.

J.F. Beams
60 Ac.

Quaker Church